

(1) (2)
SMR Federal
Code Stock
Number

(3)
DESCRIPTION

TM9-2320-211-34P

(4) (5) (6)
UNITS of inc. allowance
meas in
Unit

(7)
allowance

(8) (9) (10)
alw maint

per alw
100 per (a) (b)
equip100 Figure Item
cnt- equipNo. No.

Reference Number & Mfr. Code

Usable On Code

(a) (b) (c) (a) (b) (c)
1-20 21-5(51-10(1-20 21-5(51-10(gcy

1506-FIFTH WHEEL-CONTINUED

P-F	2510-706-81	JAW:COUPLER ASSEMBLY,RIGHT 8742718 (19207)	AG	EA	1	*	*	*	*	*	*	*	120	20	
P-F	2510-706-81	JAW:COUPLER ASSEMBLY,LEFT 7068179 (19207)	AG	EA	1	*	*	*	*	*	*	*	120	20	
P-F	5315-209-72	PIN,COTTER: MS24665-625 (96906)	AG	EA	2	*	*	*	*	*	*	*	120	21	
P-F	2510-740-98	PLATE,WHEEL APPROACH:RIGHT 7409884 (19207)	AG	EA	1	*	*	*	*	*	*	2	5	121	1
P-F	2510-740-98	PLATE,WHEEL APPROACH:LEFT 7409883 (19207)	AG	EA	1	*	*	*	*	*	*	2	5	121	2
P-F	5305-727-56	SCREW,CAP,HEXAGON:WHEEL PLATES MS90726-162 (96906)	AG	EA	10	*	*	*	*	*	*	6	10	121	3
P-F	5310-982-68	NUT,SELF-LOCKING:WHEEL PLATES MS21044N10 (96906)	AG	EA	30	*	*	*	*	*	*	6	10	121	4
P-F	5305-725-41	SCREW,CAP,HEXAGON:WHEEL PLATES MS90726-163 (96906)	AG	EA	4	*	*	*	*	*	*	6	10	121	5
X2-F		CROSSMEMBER: 10943OR11 (31007)	AG	EA	1	*	*	*	*	*	*			121	6
NON-ILLUSTRATED															
P-F	2510-408-46	CLIP:DECK PLATE 10883335 (19207)	AG	EA	4	*	*	*	*	*	*	4	8		
P-F	2510-422-20	SPACER:FIFTH WHEEL APPROACH PLATES 11608882 (19207)	AG	EA	2	*	*	*	*	*	*	4			
P-F	2510-918-06	JAW ASSEMBLY,FIFTH:LEFT AND RIGHT 8742718 (19207)	AG	EA	1	*	*	*	*	*	*	4	8		
P-F	5305-264-28	SCREW,CAP,HEXAGON:DECK PLATE MS90726-64 (96906)	AG	EA	6	*	*	*	*	*	*	6	10		
P-F	5305-725-41	SCREW,CAP,HEXAGON:APPROACH PLATE MOUNTING MS90726-164 (96906)	AG	EA	6	*	*	*	*	*	*	6	10		
P-F	5310-080-60	WASHER,SELF-LOCKING:DECK PLATE MS27183-14 (96906)	AG	EA	2	*	*	*	*	*	*	6	10		
P-F	5310-982-49	NUT,SELF-LOCKING:DECK PLATE MS21045-6 (96906)	AG	EA	6	*	*	*	*	*	*	6	10		
P-F	5340-809-62	SPACER,SLEEVE:PLUNGER LOCK 11640341 (19207)	AG	EA	2	*	*	*	*	*	*	4	8		
P-F	5310-982-49	SPACER,DECK PLATE 11658696 (19207)	AG	EA	2	*	*	*	*	*	*	4	8		
X2-F		PLATE,DECK: 11658697 (19207)	AG	EA	1	*	*	*	*	*	*				

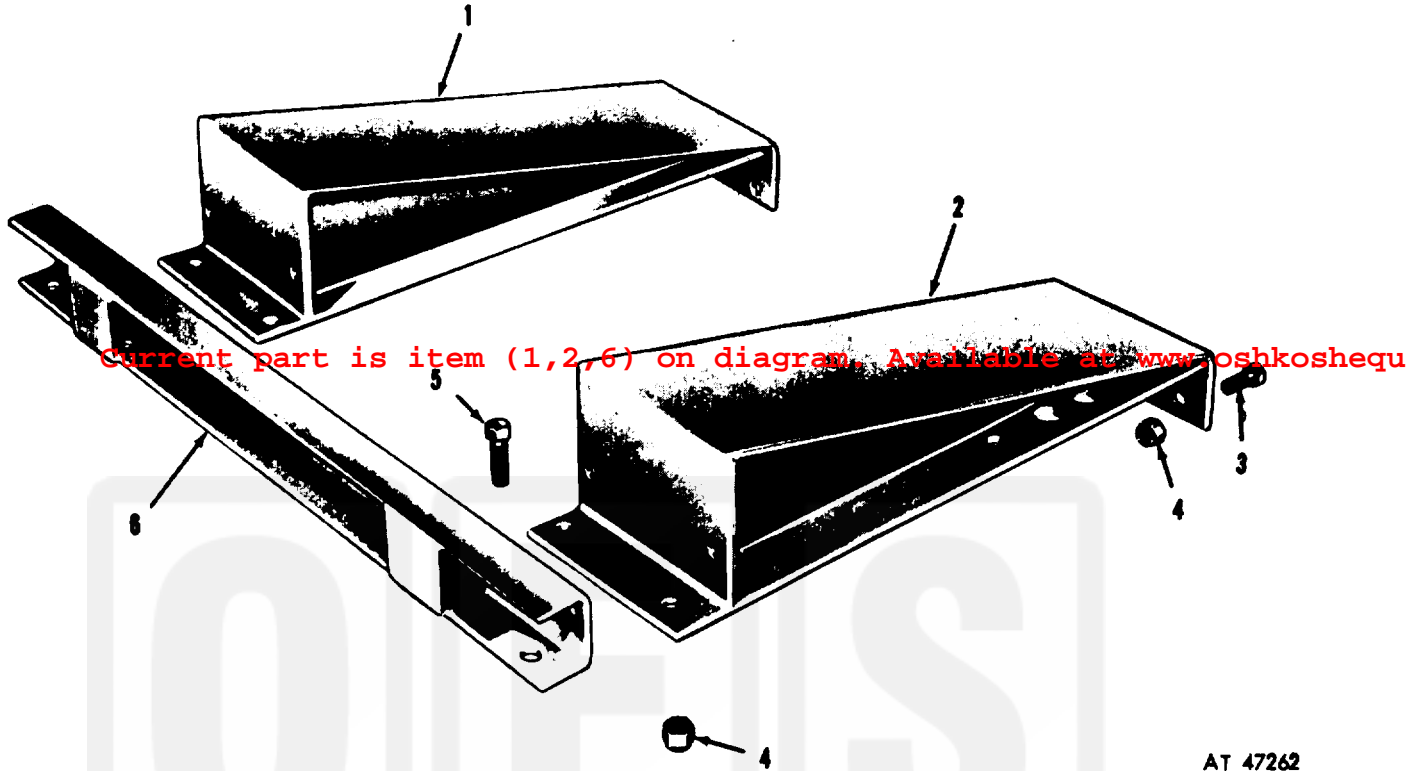


Figure 121. Fifth wheel approach plates.

AT 47262

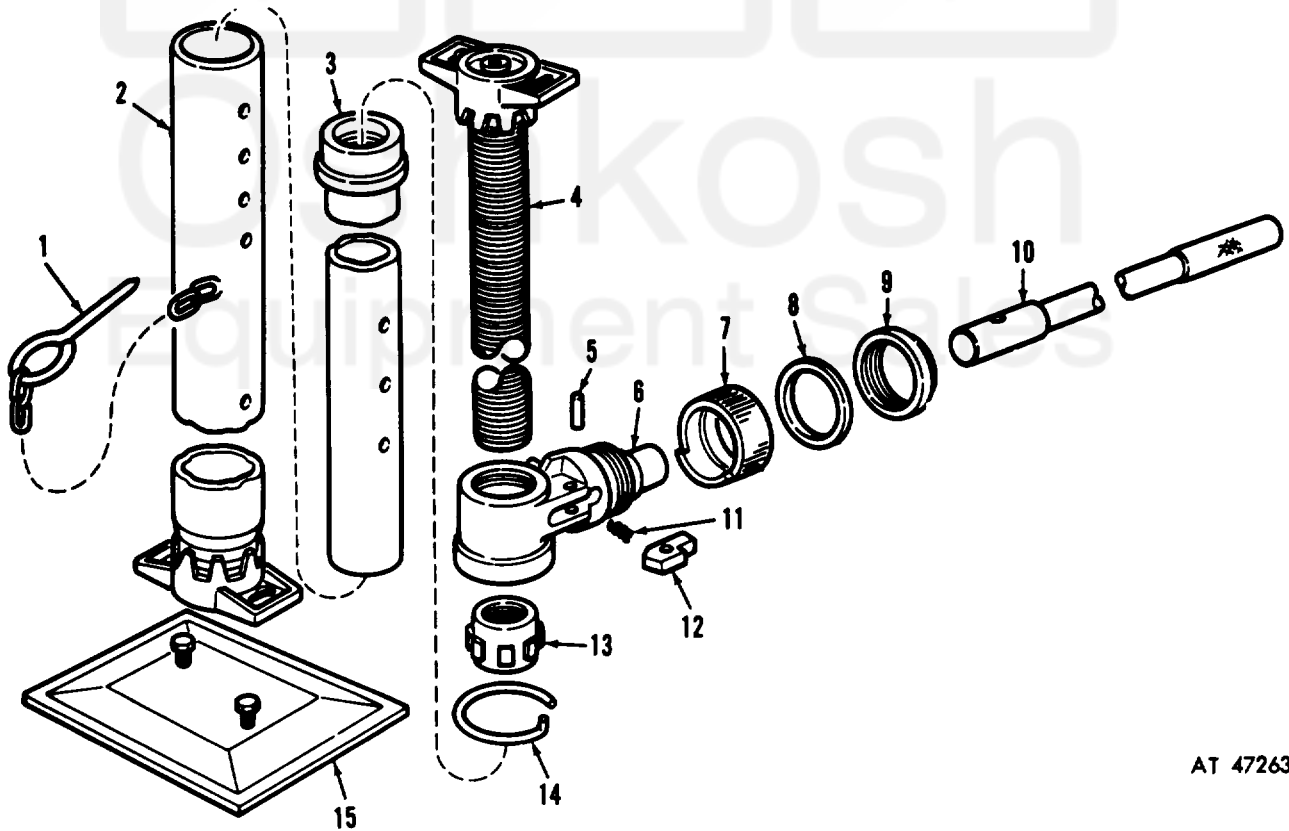


Figure 122. Leveling jack assembly.

AT 47263